



PRE-QUALIFICATION PACKAGE



Look Good Building.

We are on a mission to deliver high-quality projects that enrich the lives of people and their communities.

Contact Us

Corporate Office

250 County Rd. 4925

Leonard, TX 75452

Phone: (817) -295-6100

Email: info@tgreectors.com

PLANNING

SEQUENCE COORDINATION

SCHEDULING

LIFT PLANNING

ENGINEERED TEMPORARY BRACING

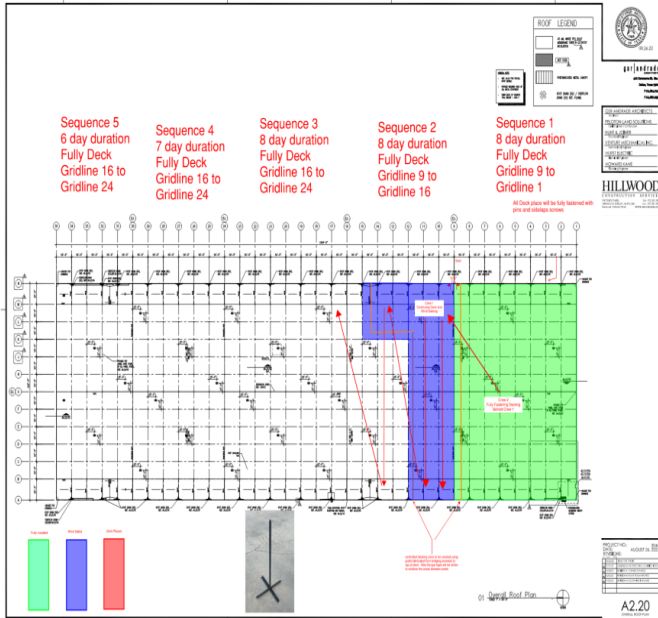
QUALITY CONTROL

SAFETY PLANNING



STEEL SITE SPECIFIC ERECTION PLAN

ERECTION PLAN INDEX



1. Cover Sheet	1
2. Erection Plan Index	2
3. Erection Lifts Table	3
4. 90T RT Crane Information and Checklists	4-11
5. 8K SkyTrak Data Sheet	12-13
6. 10K SkyTrak Data Sheet	14-16
7. 1360 B Jib Boom Data Sheet	17-18
8. 1302 2ft Truss Boom Data Sheet	19-20
9. Written Erection Plan Summary	21-23
10. Steel Erection Plan Mark Ups	24-30
11. Operator and Crew Certifications	31-End



PLANNING



SEQUENCE COORDINATION

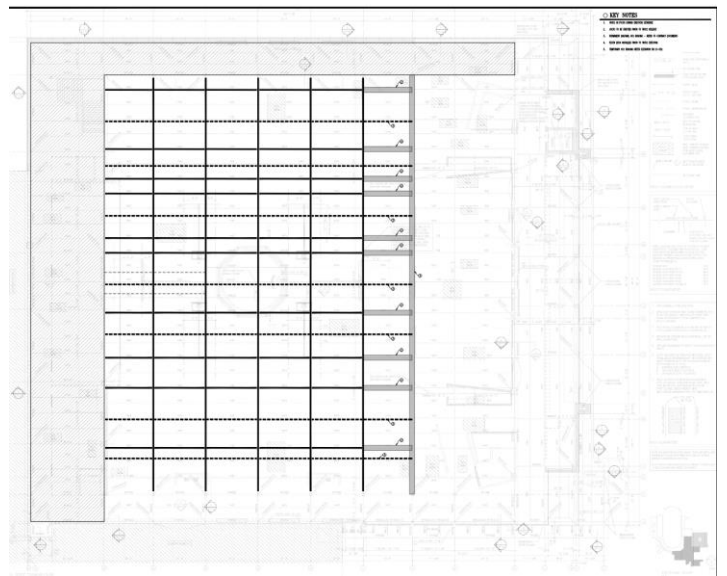
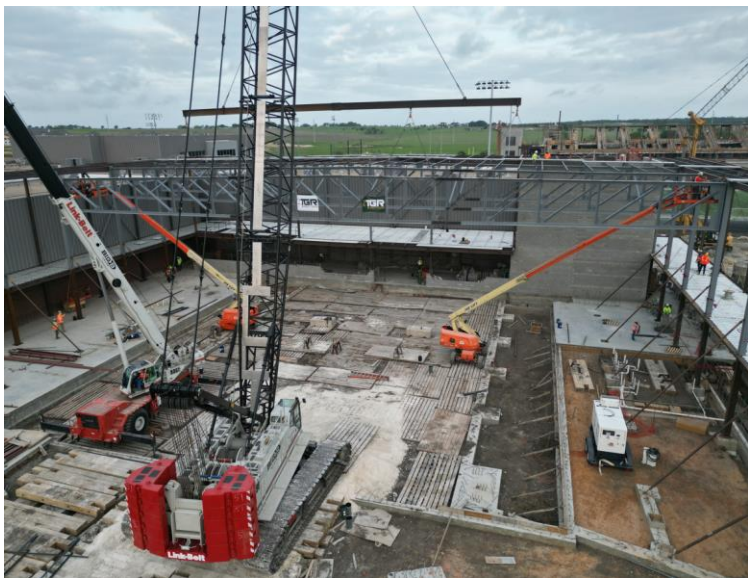
SCHEDULING

LIFT PLANNING

ENGINEERED TEMPORARY BRACING

QUALITY CONTROL

SAFETY PLANNING



PRECONSTRUCTION SUBMITTALS



SITE SPECIFIC ERECTION PLAN

SITE SPECIFIC SAFETY PLAN

SAFETY MANUAL

MATERIAL SDS BOOK

CREW CERTIFICATIONS

NON-CONFORMANCE REPORTS

STEEL ERECTION CHECKLISTS

PRE-QUALIFIED WELDING

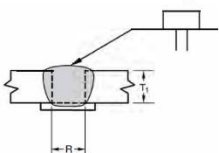
PROCEDURES



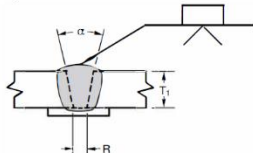
TGR-WPS-D1.1-SMAW (Rev. 0)

Table 5

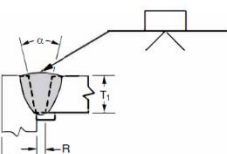
Approved CJP Joint Configurations



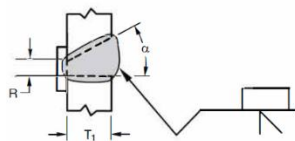
Joint Designation	B(C)-1a
Base Metal Thickness (T ₁)	1/4" Max
Base Metal Thickness (T ₂)	N/A
Root Opening (R)	R=1/8" (+5/16", -1/16")
Root Face (f)	N/A
Groove Angle (α)	N/A
Welding Positions	All



Joint Designation	B-U2a
Base Metal Thickness (T ₁)	Unlimited
Base Metal Thickness (T ₂)	N/A
Root Opening (R)	1/4" to 1/2" (+5/16", -1/16")
Root Face (f)	N/A
Groove Angle (α)	20°-45° (+10°, -5°)
Welding Positions	Flat, Vertical, & Overhead



Joint Designation	C-U2a
Base Metal Thickness (T ₁)	Unlimited
Base Metal Thickness (T ₂)	Unlimited
Root Opening (R)	1/4" to 1/2" (+5/16", -1/16")
Root Face (f)	N/A
Groove Angle (α)	20°-45° (+10°, -5°)
Welding Positions	Flat, Vertical, & Overhead



Joint Designation	B-U4a
Base Metal Thickness (T ₁)	Unlimited
Base Metal Thickness (T ₂)	N/A
Root Opening (R)	1/4" to 3/8" (+5/16", -1/16")
Root Face (f)	N/A
Groove Angle (α)	30°-45° (+10°, -5°)
Welding Positions	All

Welding Procedure Specification (WPS)

Company	TGR Erectors	WPS Number	TGR-WPS-D1.1-SMAW
Welding Process(es)	SMAW	WPS Revision	Rev. 0
Process Type(s)	Manual	WPS Approval Date	June 17, 2021

Joints			
Joint Type	See Table 5, 6, & 7	Backing	With (for CJP Welds)
Groove Angle	See Table 5, 6, & 7	Backing Type	See Table 1
Root Opening	See Table 5, 6, & 7	Backgouging	N/A
Root Face	See Table 5, 6, & 7	Backgouging Method	N/A

Base Metals			
P-Number	1	AWS Group Number:	I & II
Specification, Type and Grade	See Table 1	to	See Table 1
Material Thickness	1/8" to Unlimited	Diameter	Unlimited

Filler Metals			
AWS Classification	See Table 2	Weld Metal Analysis A-Number	1
AWS Specification	AWS A5.1 & AWS A5.4	Filler Metal Diameter	3/32" to 5/16"
Filler Metal F-Number	F1 to F4	Consumable Insert	N/A
Weld Metal Thickness	1/8" to Unlimited	Electrode Flux (SMAW)	N/A

Positions		Preheat	
Position(s) of Groove	Flat, Horizontal, Vertical, & Overhead	Preheat Temperature (Min.)	See Table 4
Position(s) of Fillet	Flat, Horizontal, Vertical, & Overhead	Preheat Maintenance	See Table 4
Vertical Progression	Uphill	Interpass Temperature (Max.)	450°F

Electrical Characteristics		Other Variables	
Current Type/Polarity	Lincoln Ecalibur 7018 DCEP	Cup/Nozzle Size	N/A
Current/Amperage	90 - 160 amps	Cleaning Method	Grinder, Wire Wheel
Voltage	24-29 volts	Technique (Stringer/Weave Bead)	Stringer and/or Weave
Wire Feed Speed	N/A	Number of Electrodes	1
Travel Speed	8"-12"/minute	Single/Multi Pass	Single or Multiple
Filler Metal Diameter	1/8" recommended by the filler metal manufacturer	Contact Tip to Work Distance	1/16" to 1/8"
Pulsing Parameters	N/A	Cable Body or Glass Lens	N/A
Transfer Mode (CAV)	N/A	Other	N/A

Shielding		
Gas(es)	Torch Shielding	Root Shielding
Composition	-	-
Flow Rate	-	-

Certification

We, the undersigned, certify that the statements in this record are correct and the test weld(s) were prepared, welded, and tested in conformance with the requirements of AWS D1.1/D1.1M (2020 Edition).



ABOUT US

OUR BEGINNINGS

The inception of TGR Erectors began in March of 2018 with the strategic partnership of Taylor Welding and Glenn Architectural Metals. With both companies individually demonstrating excellence within their specific niche of the steel industry, the joining together of each brought great expertise and opportunity in the creation of TGR Erectors. Since the merger, TGR has become a true turn-key erection company capable of delivering even the most complex large-scale projects.

OUR FUTURE

TGR has grown rapidly in size and capability in just a short amount of time. Currently able to deliver tilt-wall projects, multi-level steel structures, complex renovations, steel side plate systems, warehouse mezzanines, large scale miscellaneous packages for concrete structures and more; we don't plan on stopping there. Operating with an average of 100 ironworkers, we have completed several projects with a total of more than 2,000 tons of steel. Providing pre-construction and erection services to multiple sectors including Educational Facilities, Data Centers, Food Processing, Warehouses, Performing Arts, Grand Churches, Retail, Community Recreation, Office Buildings, etc., there is no lack of experience in our team. With great success in such a short amount of time, a strong foundation has been set for TGR Erectors, and we look forward to a bright future deliver high-quality projects that enrich the lives of people and their communities for years to come.

THE VISION

Our aim is to be a vital business partner for our clients, bringing valuable expertise and experience throughout each phase of their project. By providing a wide array of pre-construction and construction services in addition to a top tier erection team, we work to make our clients look good throughout the entire construction timeline. With TGR you can expect high quality work, a reliable schedule, and minimal management effort on even your most complex projects.

OUR VALUES

Transparency.

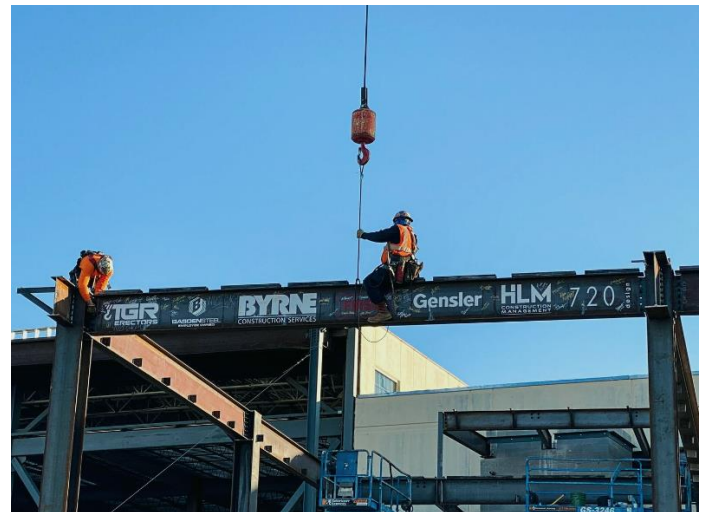
The use of white in our logo represents the transparency of action in our methods from start to finish.

Growth & Prosperity.

The green of our logo represents our value in the continuing growth and prosperity for ourselves, and our clients. We are a company of innovators that constantly seek unique solutions.

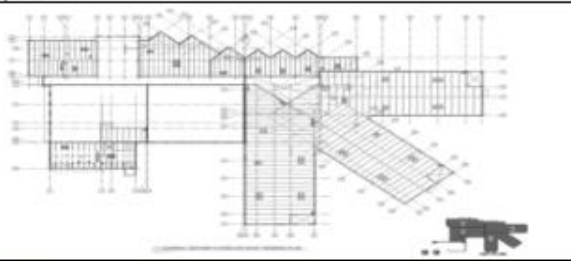

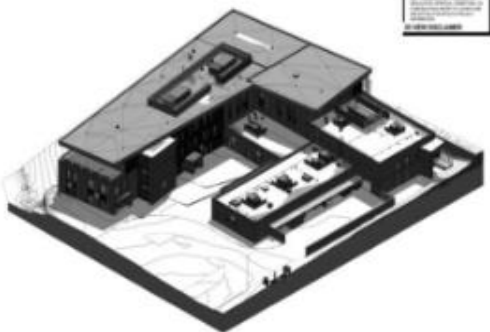


Wisdom.

The gold of our logo represents immense value in the wisdom we bring with our professional expertise and commitment to work excellence.



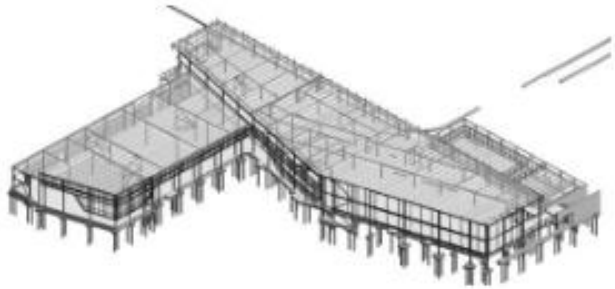
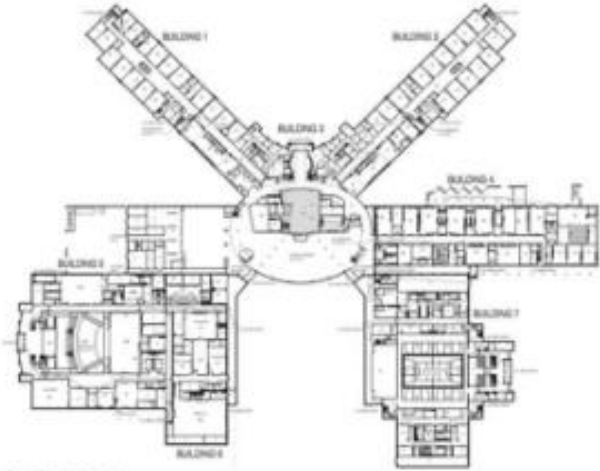
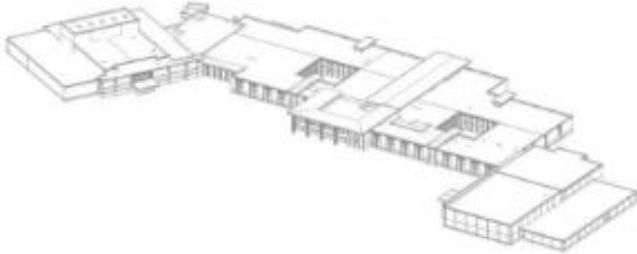
OUR TRACK RECORD

TGR Notable Projects

Project Name	General Contractor	Project Size	Project Picture
China Spring Elementary School	Built Wright Construction	563 tons	
Celina Middle School	Northstar Builders	1123 Tons	
Weatherford College	Imperial Construction	472 tons	
Frisco HS 12	Core Construction	1968 tons	
Frisco ISD Swim Expansion	Core Construction	109 tons	



OUR TRACK RECORD

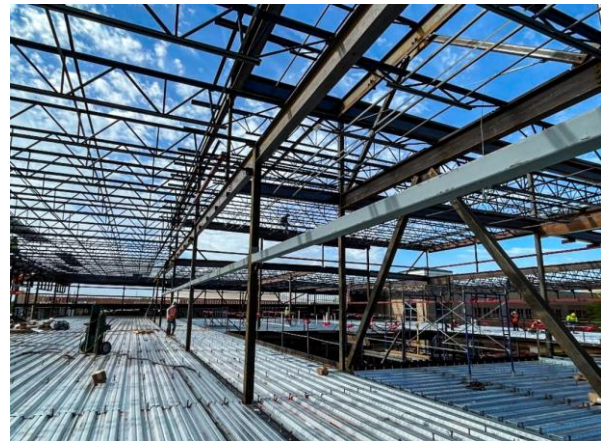
Amon Carter	Byrne Construction	852 tons	
Denton High School	Northstar Builders	2616 tons	
Frisco HS 11	Core Construction	2189 tons	

OUR TRACK RECORD



NORTHWEST ISD HIGHSCHOOL ADDITION

NORTHWEST ISD HIGHSCHOOL ADDITION



WACO CARVER MIDDLE SCHOOL



OUR TRACK RECORD



ST. MARKS CATHOLIC CHURCH

TRADE POINT 45



WACO TENNYSON MIDDLE SCHOOL

